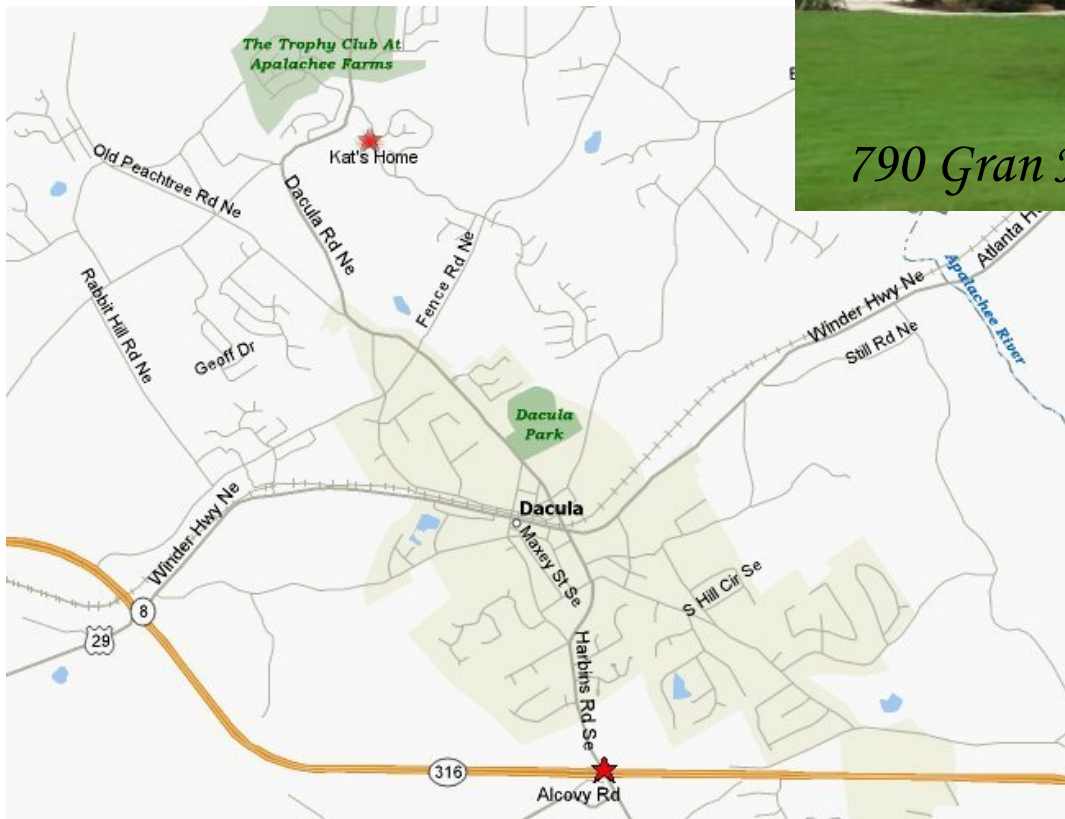


To Kat's from Athens, GA
(approximately 30 miles)

Take Hwy 316 West (aka University Pkwy) towards Lawrenceville / Atlanta (continue for approximately 25 miles); turn right on Harbins Road and go one mile; cross over Winder Hwy and



790 Gran Heritage Way; Dacula, GA



Harbins turns into Dacula Road; continue another mile passing Dacula Park on your right and then crossing over Fence Road; continue about another mile and a half on Dacula Road; turn right on Gran Heritage Way into Apalachee Heritage Subdivision; look for the seventh house on the right; #790 on the mail box.